

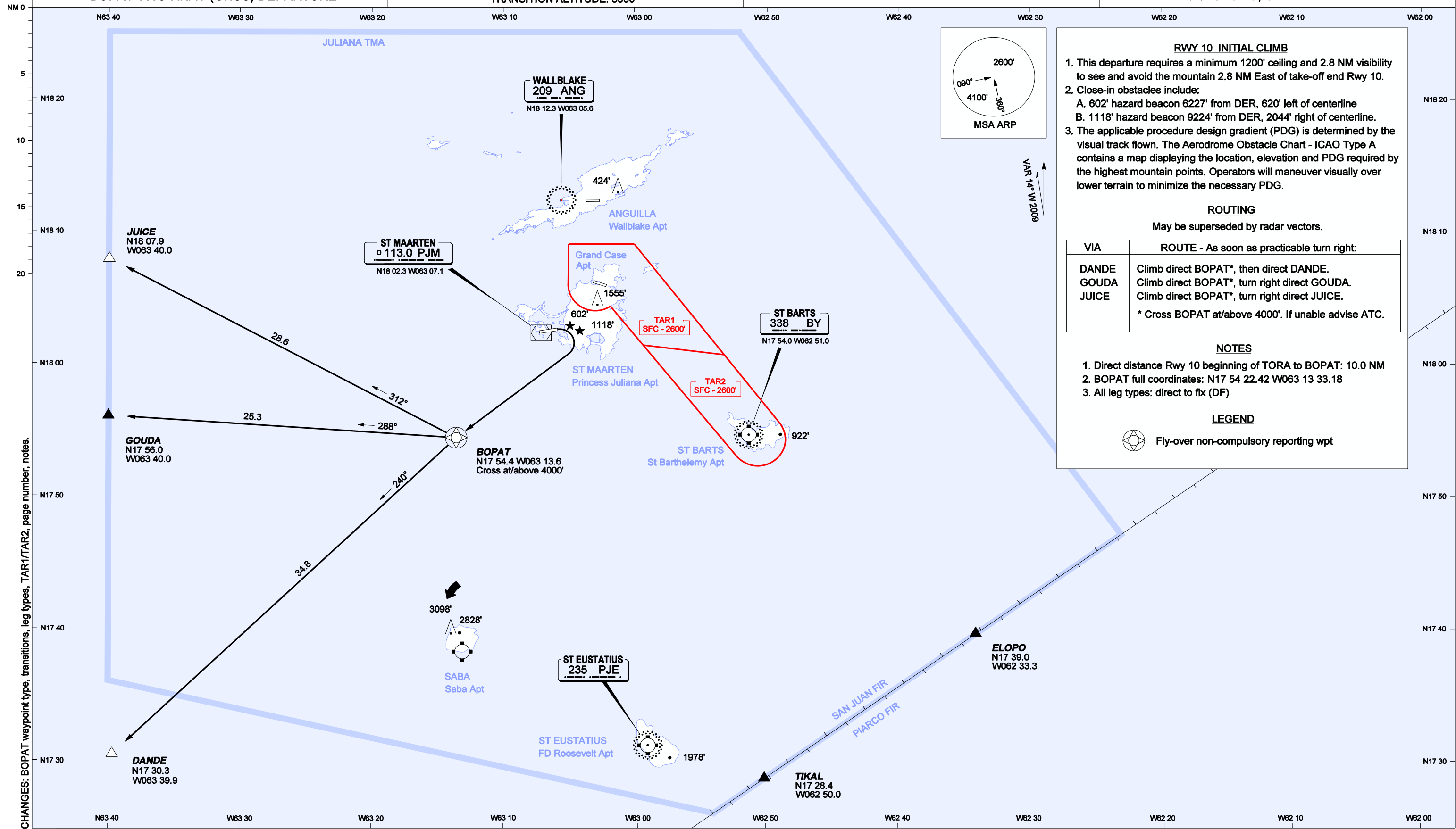
AIP DUTCH CARIBBEAN

SID - ICAO  
BOPAT TWO RNAV (GNSS) DEPARTURE

AERODROME ELEVATION: 14'  
TRANSITION LEVEL: FL65  
TRANSITION ALTITUDE: 5000'

JULIANA APPROACH: 128.95 (PRIMARY), 118.7  
JULIANA TOWER: 118.7

PRINCESS JULIANA INT'L (TNCM)  
PHILIPSBURG, ST MAARTEN



VAR 14° W 2009

**RWY 10 INITIAL CLIMB**

- This departure requires a minimum 1200' ceiling and 2.8 NM visibility to see and avoid the mountain 2.8 NM East of take-off end Rwy 10.
- Close-in obstacles include:
  - 602' hazard beacon 6227' from DER, 620' left of centerline
  - 1118' hazard beacon 9224' from DER, 2044' right of centerline.
- The applicable procedure design gradient (PDG) is determined by the visual track flown. The Aerodrome Obstacle Chart - ICAO Type A contains a map displaying the location, elevation and PDG required by the highest mountain points. Operators will maneuver visually over lower terrain to minimize the necessary PDG.

**ROUTING**  
May be superseded by radar vectors.

VIA	ROUTE - As soon as practicable turn right:
DANDE	Climb direct BOPAT*, then direct DANDE.
GOUDA	Climb direct BOPAT*, turn right direct GOUDA.
JUICE	Climb direct BOPAT*, turn right direct JUICE.

\* Cross BOPAT at/above 4000'. If unable advise ATC.

**NOTES**

- Direct distance Rwy 10 beginning of TORA to BOPAT: 10.0 NM
- BOPAT full coordinates: N17 54 22.42 W063 13 33.18
- All leg types: direct to fix (DF)

**LEGEND**

Fly-over non-compulsory reporting wpt

CHANGES: BOPAT waypoint type, transitions, leg types, TAR1/TAR2, page number, notes.